

The mystery of having *one* location but *multiple* address answers

Issued by [AfriGIS](#)

30 Mar 2017



Why one location has multiple address answers

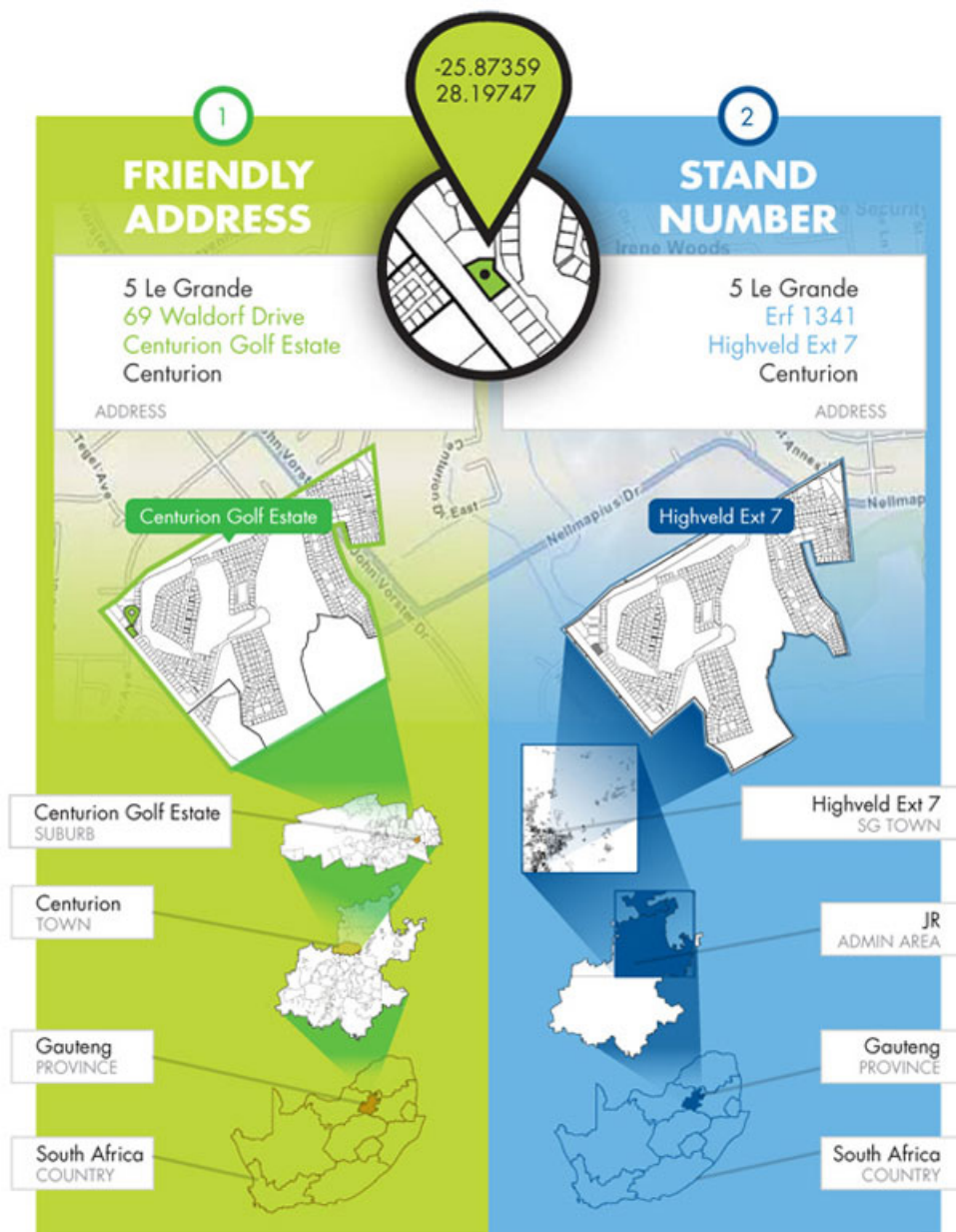
We received many queries and had interesting discussions around this topic after the publication of our November 2016 Newsflash.

Based on the number of requests received, we have decided to present the same information again, in order to provide more clarity and further information on *how* AfriGIS can assist you to solve data management challenges.

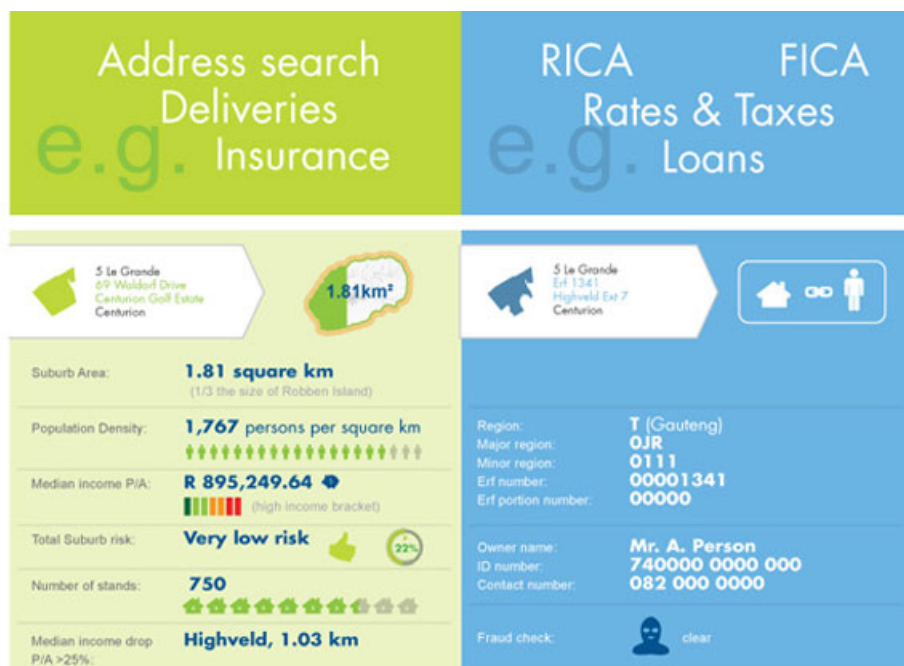
Our country's history results in different sets of boundaries fulfilling different purposes and as clearly indicated by our clients, this can cause substantial challenges in terms of master data management.

Due to the misunderstandings and complexities around it, we wanted to enlighten you again regarding *why* they are different.

Hence the diagram below, illustrating why *one* location has *multiple* address answers.



AfriGIS enables you to make sense of the complexities, legacy and data challenges.



Our products and solutions empower you to *identify* the challenges and by using our toolset you can *integrate* the *correct answers* into your data-capturing processes.

Because our addresses are *smart* they also link to deeds, CIPC, census, postal code boundaries and the like...

The *benefits* you will get are numerous:

- increased business opportunities
- improved compliance
- better production times
- effective marketing campaigns
- supply chain efficiencies
- revenue gain
- accurate business decisions
- satisfied customers
- and more...

Your master data accuracy ensures the quality of your end-results and services.

[Contact us](#) to see how our smart addresses can solve your data management challenges.

" AfriGIS's Peter Smythe appointed to GeoServer Project Steering Committee 14 May 2024

" Location intelligence is the secret weapon of data-driven banking 13 Mar 2024

" A GIS leap forward in the customer journey 28 Feb 2024

" What are you looking for? 14 Feb 2024

" Steering FMCG growth with GIS insights 30 Jan 2024

[AfriGIS](#)



We create ONE OF A KIND GEOSPATIAL SOLUTIONS. We use geospatial information science to bring information about WHERE to life across industries and in any application. This helps our clients unlock value through better business intelligence.

[Profile](#) | [News](#) | [Contact](#) | [Twitter](#) | [Facebook](#) | [RSS Feed](#)

For more, visit: <https://www.bizcommunity.com>